

Countywide Recycling and Disposal Facility

Weekly Progress Report

09/19/08

This Weekly Progress Report is prepared by Countywide and submitted to the OEPA weekly by the close of business on each Friday. This meets the requirement of Order No. 5 of the December 31, 2007 Findings and Orders to provide updates on progress of field activities.

In addition, this report provides updated presentations of data being collected. All information presented in this report originates from the publicly-available data being gathered as part of the normal operational requirements of the facility or as part of the Director's Findings and Orders. **This report covers the period September 13, 2008 to September 19, 2008.**

PROGRESS ON FIELD ACTIVITIES TOWARD DECEMBER 31, 2007 ORDERS

See the attached **Table 1**.

DATA PRESENTATION

Bold font in comments column means updated version included with this report.

<u>Attachment</u>	<u>Attachment No.</u>	<u>Comments</u>
Wellhead Temperature Graph	1	Updated Sept. 19, 2008
Downhole Temp. Graph	2	Updated Sept. 12, 2008
FBMP Max. In-Situ Temp. Graph	3	Updated Sept. 12, 2008
INC In-Situ Temp. Graph	4	Updated Sept. 19, 2008
Leachate Sump Temperature. Graph	5	Updated August 29, 2008
LCS Temperature Graph	6	Updated August 29, 2008
Weekly Cumulative Sett. Graph	7	Updated August 29, 2008
Quarterly Cumulative Sett. Graph	8	Updated June 27, 2008
CO Graph	9	Updated Sept. 19, 2008
Leachate Volume Graph	10	Updated Sept. 12, 2008
Leachate COD Graph	11	Updated August 22, 2008
Leachate TDS Graph	12	Updated August 22, 2008
Odor (Nasal Ranger) Readings	13	Updated August 29, 2008

<u>Appendices (transmitted separately)</u>	<u>Appendix No.</u>	<u>Comments</u>
Wellhead Temperature Zone Map	A	Updated Sept. 5, 2008
4-Week Cumulative Sett. Front Map	B	Updated July 18, 2008
Carbon Monoxide Zone Map	C	Updated August 29, 2008

AMBIENT AIR SAMPLING ACTIVITIES LOG

See attached **Table 2**.

OUTSTANDING ISSUES

Significant documents pending OEPA review, comment, and/or approval:

- Fire Suppression Plan submitted May 25, 2007
- Permit-to-Install (PTI) "Needs Analysis" submitted May 29, 2007
- Data Reduction Request submitted September 6, 2007, May 20, 2008
- Dewatering and EGES Enhancement Work Plan submitted on Jan. 14, 2008

TABLE 1

**WEEKLY PROGRESS REPORT FOR DECEMBER 31, 2007 F&Os
COUNTYWIDE LANDFILL
WEEK ENDING 09-19-08**

Work Item	Units of Measure	Estimated Required or Goal*	Previously Completed	Completed This Period	Total Completed to Date	Est. to be Completed Next Week	Comments
Install Vertical Relief Wells	ea.	4	4	0	4	0	RW-4 is currently not pumping, and is in an actively settling area; this situation is under assessment to determine if this well can be maintained.
Install Perm. Dewatering Pumps and Infrastructure	ea.	44	44	0	44	0	
Install 4-inch HDPE Liquid Discharge Line	l.f.	3000	3000	0	3000	0	Due to capping activities, segments of this line were temporarily decommissioned. It will be replaced in like segments as soon as possible following capping in a particular area.
Install 2-inch HDPE Air Supply Line	l.f.	10500	10500	0	10500	0	Due to capping activities, segments of this line were temporarily decommissioned. It will be replaced in like segments as soon as possible following capping in a particular area.
Install and Test Compressors	ea.	3	3	0	3	0	
Relocate Flares from Top of Landfill	ea.	1	1	0	1	0	
Install New Gas Wells	ea.	37 (original goal was 10)	37	0	37	0	
Replace Compromised Wells	ea.	23 (original goal was 12)	23	0	23	0	
Install Perm. Dewatering Pumps in New and Replacement Gas Wells	ea.	20	18	0	18	0	
Install 4-inch HDPE Liquid Discharge Line for new gas wells	l.f.	2000	2500	0	2500	0	Due to capping activities, segments of this line were temporarily decommissioned. It will be replaced in like segments as soon as possible following capping in a particular area.
Install 2-inch HDPE Air Supply Line for new gas wells	l.f.	2000	2500	0	2500	0	Due to capping activities, segments of this line were temporarily decommissioned. It will be replaced in like segments as soon as possible following capping in a particular area.
Measure Achievable Drawdown	ea.	73	73	0	73	0	
Establish Baseline Flow	ea.	1	0	0	0	0	A meeting was held between Countywide and OEPA, wherein a proposal was made for the standard to be achieved prior to performing a baseline gas flow. Countywide will formalize this proposal and submit it soon.

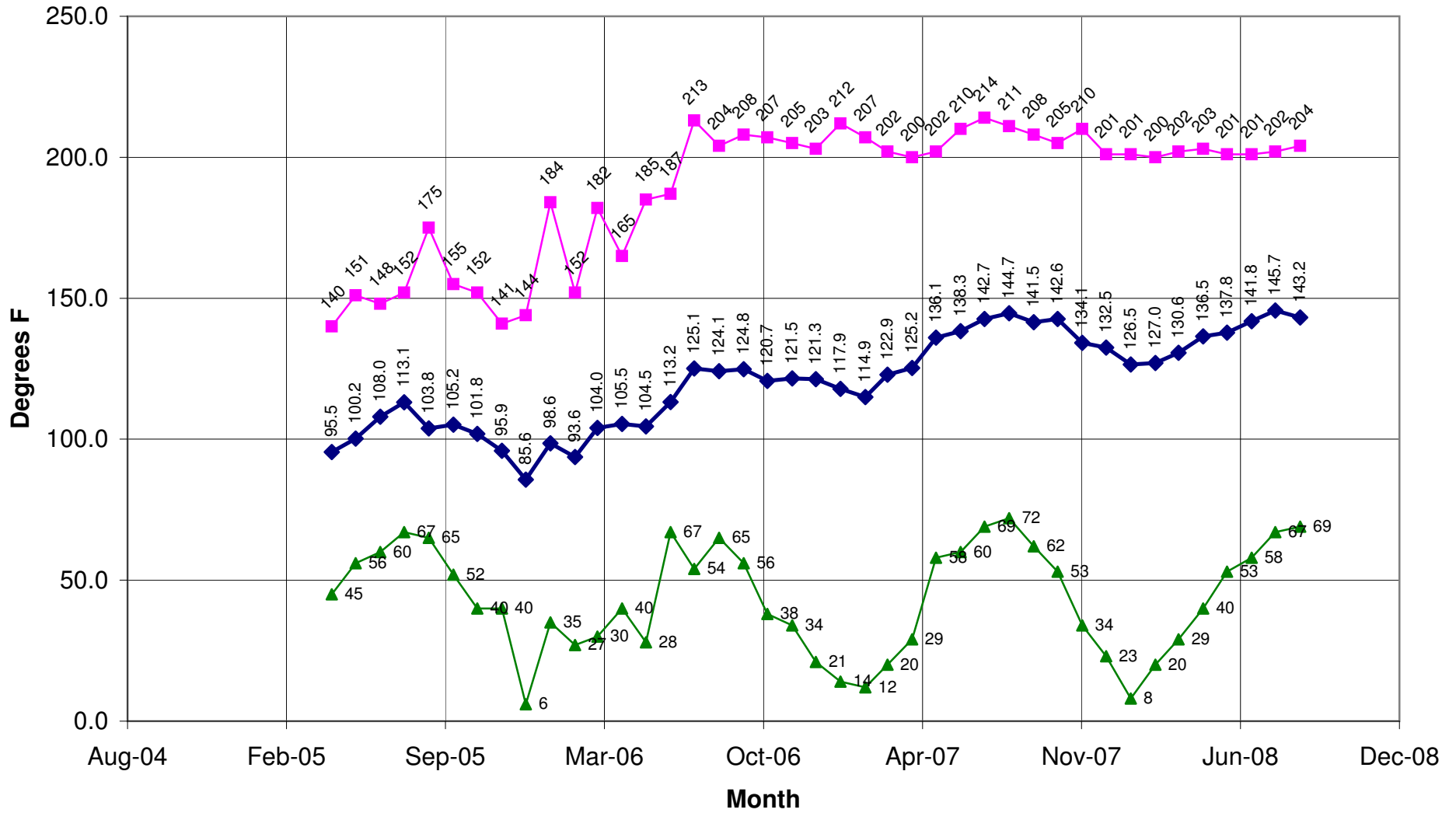
* The estimate of "required" or "goal" items may change as project progresses.

Note: This table presents one-time field activities and does not address recurring activities such as liquid level measurements, downhole temperature profiles, liquid sampling, etc.

Table 2
Log of Field Activities and Conditions
Per Order No. 2.B of Feb. 7, 2008 Orders

Date	Approx. Time	Contractor	Field Activity or Potentially Odor-Causing Incident.
9/7/08	N/A	N/A	No activities monitored
9/8/08	7:00 - 10:30	AEG	Cracks emitting odor on top of Cell 5 were fixed
9/8/08	8:00 - 9:00	AEG	Repaired the saddle near PW-167 at the 18" header line
9/8/08	7:00 - 18:30	BVR/AEG	Open excavation for the Leachate/LFG collector, toe collector, liquid header in Area "W"
9/8/08	7:00 - 17:00	AEG	Blackhawk pump maintenance and O&M leachate sampling.
9/9/08	7:00 - 9:30	AEG	Cracks emitting odor on top of Cell 5 were fixed
9/9/08	7:00 - 17:00	AEG	Blackhawk pump maintenance and O&M leachate sampling.
9/10/08	7:00 - 18:30	BVR/AEG	Open excavation for the toe collector tie-in and liquid header in Area "W" and "W"/"E"
9/10/08	7:00 - 7:30	AEG	Added Bentonite to crack formed in Cell 5 A/B previously fixed on 9/6/08
9/10/08	10:30-14:30	AEG	Removed 12" cleanout-risers from Cell 5 C/D and installed blinds on the ends
9/10/08	7:00 - 10:00	AEG/JMW	Leachate outbreak at the y-area west of RW-1
9/10/08	7:00 - 17:00	AEG	Blackhawk pump maintenance and O&M leachate sampling.
9/11/08	7:00 - 8:30	AEG	Leachate outbreak near Flare #1
9/11/08	8:30 - 10:30	AEG	Maintenance on RW-2
9/11/08	11:00 - 12:00	AEG	Installed 4" from D1-R to 18" header S. of 90 on top of Cell 5
9/11/08	12:30 - 13:30	AEG	Cut 4" vacuum line between PW-167R and cleanout-riser and re-installed from PW-167R to PW-167
9/11/08	7:00 - 18:30	BVR/AEG	Open excavation for the toe collector tie-in and liquid header in Area "W" and "W"/"E"
9/11/08	7:00 - 17:00	AEG	Blackhawk pump maintenance and O&M leachate sampling.
9/12/08	7:00 - 19:30	BVR/AEG/JMW/ET	Rain event caused backup at S.W. corner E-tank
9/13/08	7:00 - 17:00	BVR/AEG/JMW/ET	Rain event caused backup at S.W. corner E-tank

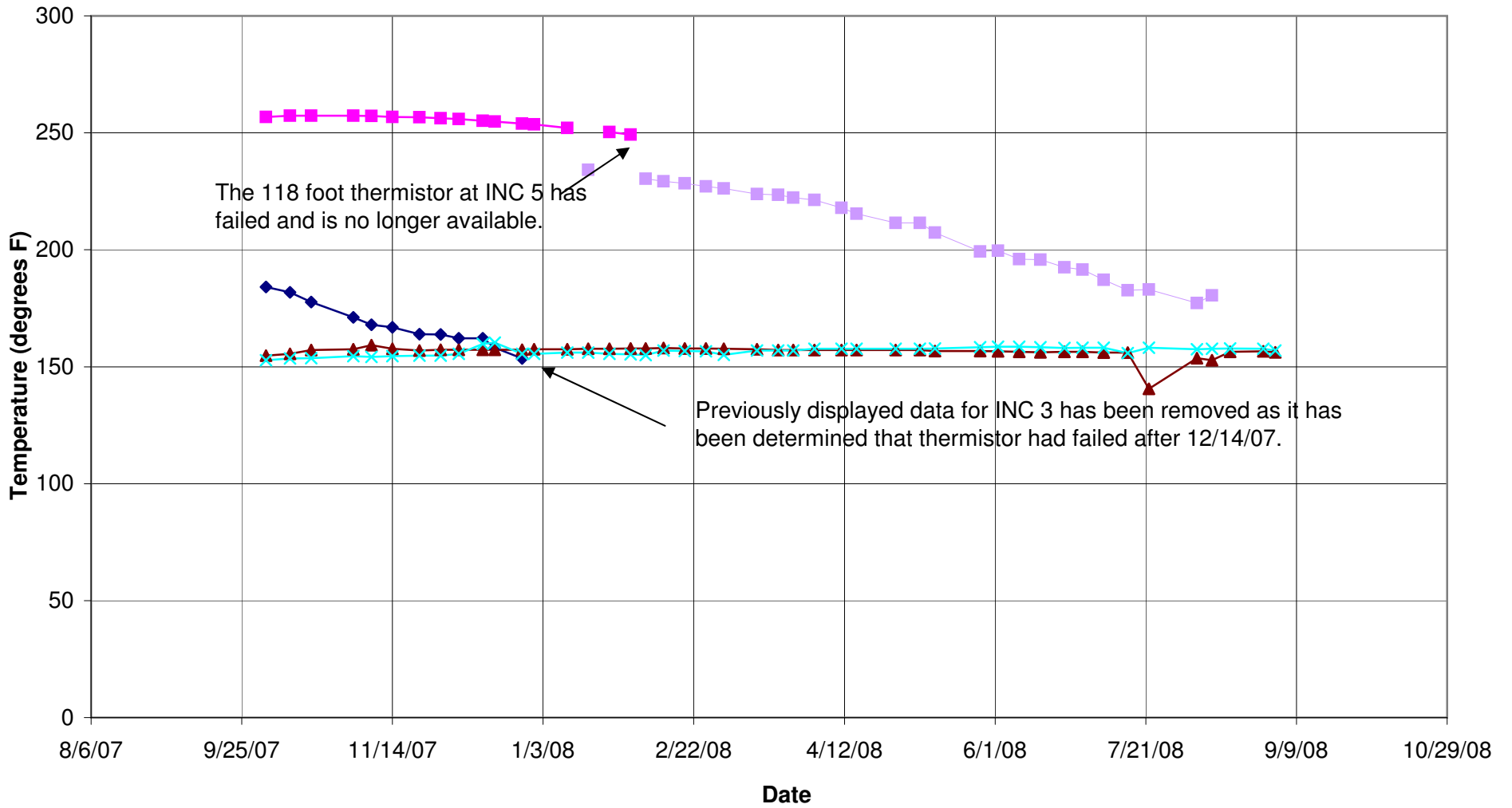
Initial Wellhead Temperatures in the 88-acre Area



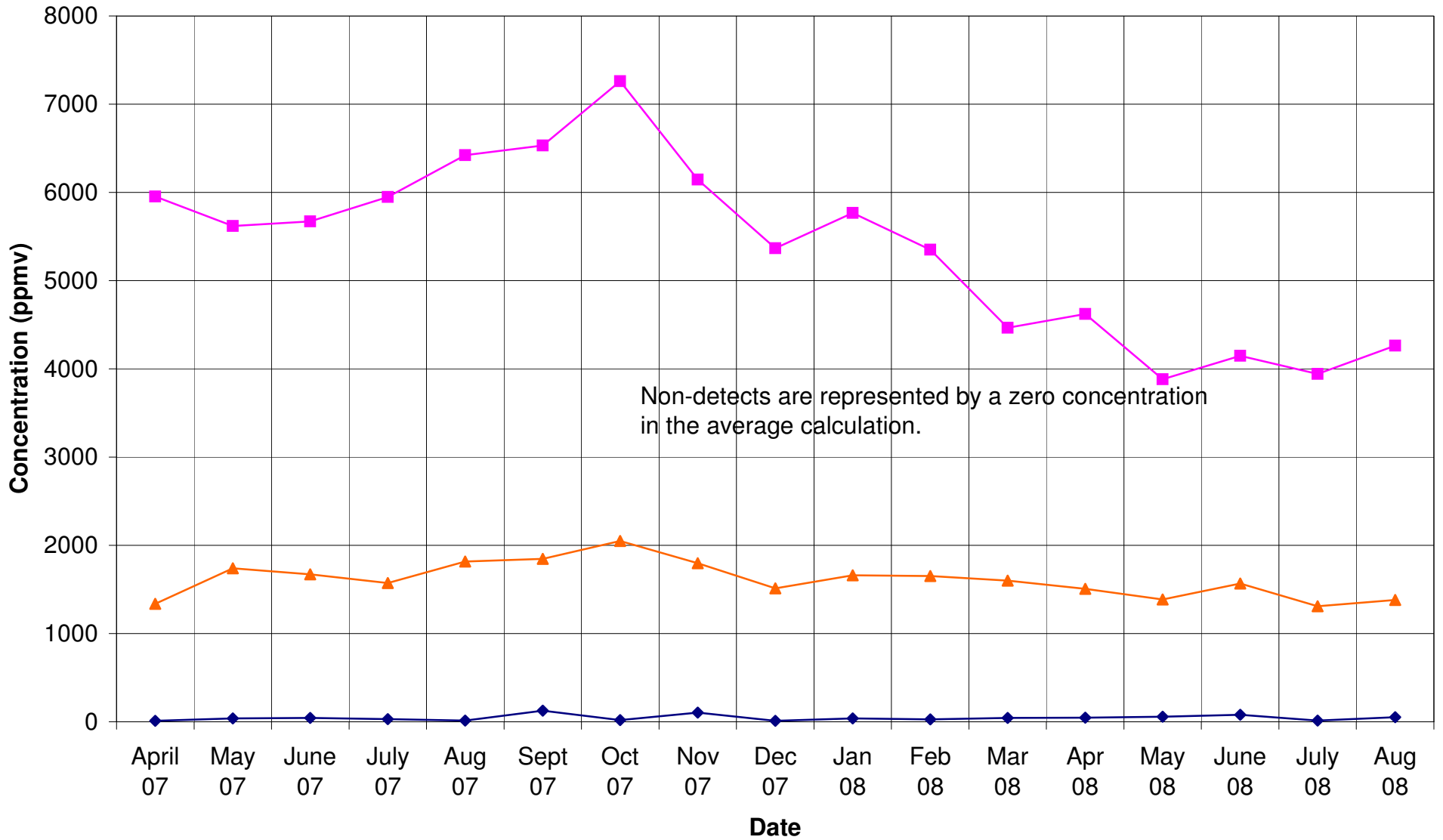
All Cell 7 wells excluded except PW-315.
Anomalous readings from PW-147 excluded for June 2008.

◆ Monthly Average ■ Monthly Maximum ▲ Monthly Minimum

In-situ Temperatures Maximum Readings per Date per Inclinator



Carbon Monoxide Concentrations (Excluding Invalid Sample Results)



◆ Minimum Detected Concentration
 ■ Maximum Concentration
 ▲ Average Concentration