

# Countywide Recycling and Disposal Facility

## Weekly Progress Report

### 12/12/08

This Weekly Progress Report is prepared by Countywide and submitted to the OEPA weekly by the close of business on each Friday. This meets the requirement of Order No. 5 of the December 31, 2007 Findings and Orders to provide updates on progress of field activities.

In addition, this report provides updated presentations of data being collected. All information presented in this report originates from the publicly-available data being gathered as part of the normal operational requirements of the facility or as part of the Director's Findings and Orders. **This report covers the period December 6, 2008 to December 12, 2008.**

#### **PROGRESS ON FIELD ACTIVITIES TOWARD DECEMBER 31, 2007 ORDERS**

See the attached **Table 1**.

#### **DATA PRESENTATION**

**Bold font in comments column means updated version included with this report.**

<u>Attachment</u>	<u>Attachment No.</u>	<u>Comments</u>
Wellhead Temperature Graph	1	Updated Nov. 14, 2008
Downhole Temp. Graph	2	Updated Nov. 14, 2008
FBMP Max. In-Situ Temp. Graph	3	<b>Updated Dec. 12, 2008</b>
Leachate Sump Temperature. Graph	5	Updated Nov. 26, 2008
LCS Temperature Graph	6	Updated Nov. 26, 2008
Weekly Cumulative Sett. Graph	7	<b>Updated Dec. 12, 2008</b>
Quarterly Cumulative Sett. Graph	8	Updated Oct. 10, 2008
CO Graph	9	Updated Nov. 14, 2008
Leachate Volume Graph	10	<b>Updated Dec. 12, 2008</b>
Leachate COD Graph	11	Updated Dec. 5, 2008
Leachate TDS Graph	12	Updated Dec. 5, 2008
Odor (Nasal Ranger) Readings	13	Updated Dec. 5, 2008

<u>Appendices (transmitted separately)</u>	<u>Appendix No.</u>	<u>Comments</u>
Wellhead Temperature Zone Map	A	Updated Nov. 14, 2008
4-Week Cumulative Sett. Front Map	B	Updated Nov. 21, 2008
Carbon Monoxide Zone Map	C	Updated Nov. 21, 2008

#### **AMBIENT AIR SAMPLING ACTIVITIES LOG**

See attached **Table 2**.

#### **OUTSTANDING ISSUES**

Significant documents pending OEPA review, comment, and/or approval:

- Fire Suppression Plan submitted May 25, 2007
- Permit-to-Install (PTI) "Needs Analysis" submitted May 29, 2007
- Dewatering and EGES Enhancement Work Plan submitted on Jan. 14, 2008

TABLE 1

WEEKLY PROGRESS REPORT FOR DECEMBER 31, 2007 F&Os  
 COUNTYWIDE LANDFILL  
 WEEK ENDING 12-12-08

Work Item	Units of Measure	Estimated Required or Goal*	Previously Completed	Completed This Period	Total Completed to Date	Est. to be Completed Next Week	Comments
Install Vertical Relief Wells	ea.	4	4	0	4	0	RW-4 is currently not pumping, and is in an actively settling area; this situation is under assessment to determine if this well can be maintained.
Install Perm. Dewatering Pumps and Infrastructure	ea.	44	44	0	44	0	
Install 4-inch HDPE Liquid Discharge Line	l.f.	3000	3000	0	3000	0	
Install 2-inch HDPE Air Supply Line	l.f.	10500	10500	0	10500	0	
Install and Test Compressors	ea.	3	3	0	3	0	
Relocate Flares from Top of Landfill	ea.	1	1	0	1	0	
Install New Gas Wells	ea.	37 (original goal was 10)	37	0	37	0	
Replace Compromised Wells	ea.	23 (original goal was 12)	23	0	23	0	
Install Perm. Dewatering Pumps in New and Replacement Gas Wells	ea.	20	18	0	18	0	
Install 4-inch HDPE Liquid Discharge Line for new gas wells	l.f.	2000	2500	0	2500	0	Full restoration to this system (following capping activities) has been performed.
Install 2-inch HDPE Air Supply Line for new gas wells	l.f.	2000	2500	0	2500	0	Full restoration to this system (following capping activities) has been performed.
Measure Achievable Drawdown	ea.	73	73	0	73	0	
Establish Baseline Flow	ea.	1	0	0	0	0	Countywide is currently performing a test to measure gain in gas flow vs. drawdown for two wells.

\* The estimate of "required" or "goal" items may change as project progresses.

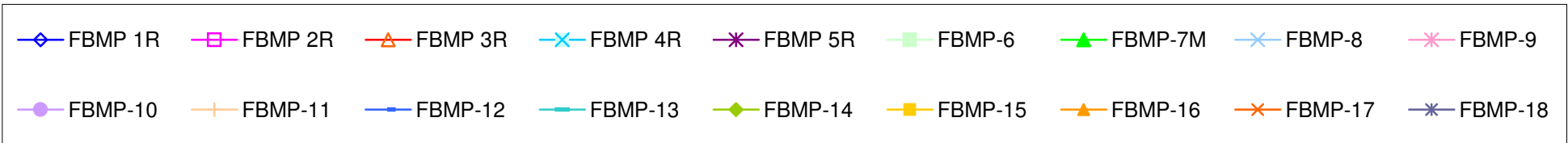
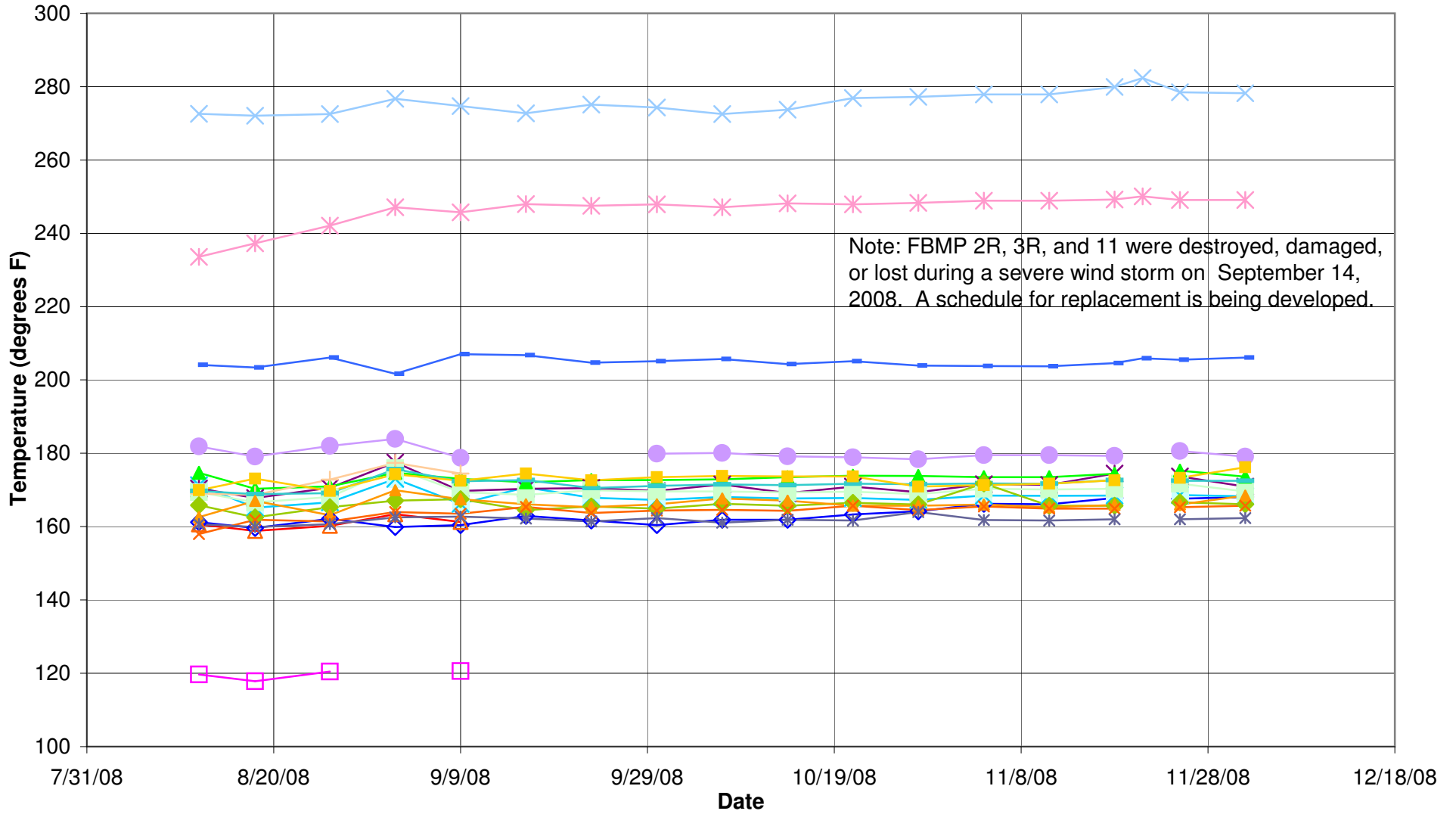
Note: This table presents one-time field activities and does not address recurring activities such as liquid level measurements, downhole temperature profiles, liquid sampling, etc.

**Table 2**  
**Log of Field Activities and Conditions**  
**Per Order No. 2.B of Feb. 7, 2008 Orders**

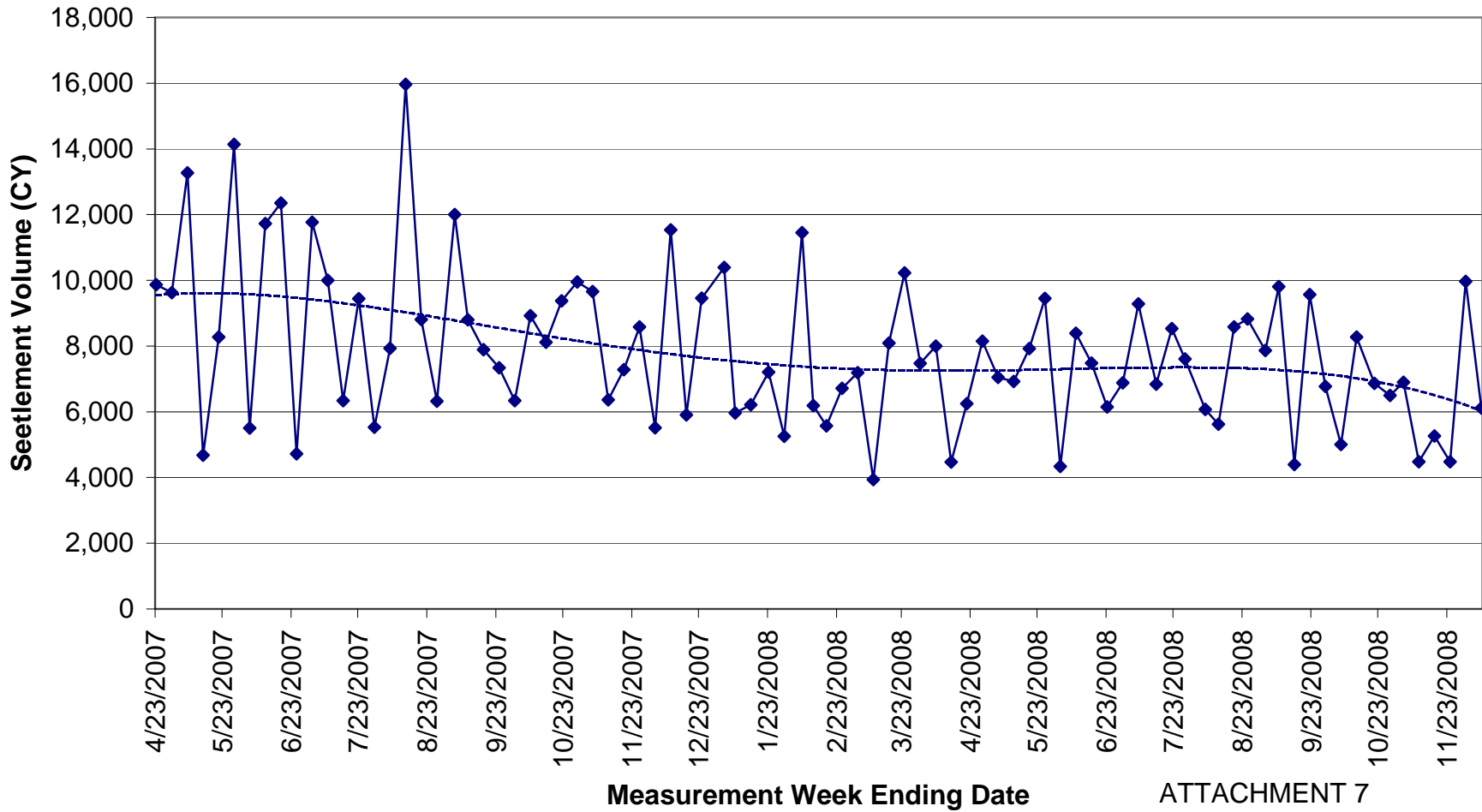
Date	Approx. Time	Contractor	Location	Field Activity or Potentially Odor-Causing Incident.
11/23/08	NA	NA	NA	No activities monitored.
11/24/08	7:00 - 17:00	AEG	88 acres	Blackhawk pump maintenance and O&M leachate sampling
11/24/08	8:06 - 16:00	AEG	Cell 7	Drilling and installing PW-374
11/25/08	7:00 - 17:00	AEG	88 acres	Blackhawk pump maintenance and O&M leachate sampling
11/25/08	8:10 - 16:30	AEG	Cell 5/7 roadway	Drilling and installing PW-364 & PW-363
11/26/08	7:00 - 16:00	AEG	88 acres	Blackhawk pump maintenance and O&M leachate sampling
11/26/08	11:05 - 16:30	AEG	NW top of Cell5C	Drilling and installing PW-361
11/27/08	7:00 - 12:00	AEG	88 acres	No activities monitored; Blackhawk pump maintenance occurred
11/28/08	7:00 - 12:00	AEG	88 acres	Blackhawk pump maintenance
11/29/08	7:00 - 12:00	AEG	88 acres	Blackhawk pump maintenance

# In-situ Temperatures Maximum Readings per Date per FBMP Boring

# ATTACHMENT 3



# Weekly Settlement Survey in "Reaction Area" Countywide Landfill



ATTACHMENT 7

Monthly Leachate Flow from 88-Acre Area  
Countywide Landfill

